



COMPONENTS	MATERIALS
Motor housing, hydraulic part	Grey cast iron
Shaft (pump side)	Stainless steel
Motor side mechanical seal	Carbon - ceramic
Pump side mechanical seal	Silicon carbide
Bolts	A2 stainless steel
Foot support	Galvanize iron
Gaskets (O-Ring)	NBR rubber

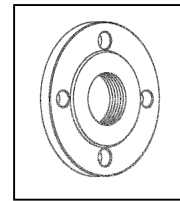
CHARACTERISTICS	
Electric motor	Asynchronous, oil immersed
Liquid temperature	0 - 40 °C
Insulation Class	F
Protection	IP 68
Cable	10 m. - H07 RNF



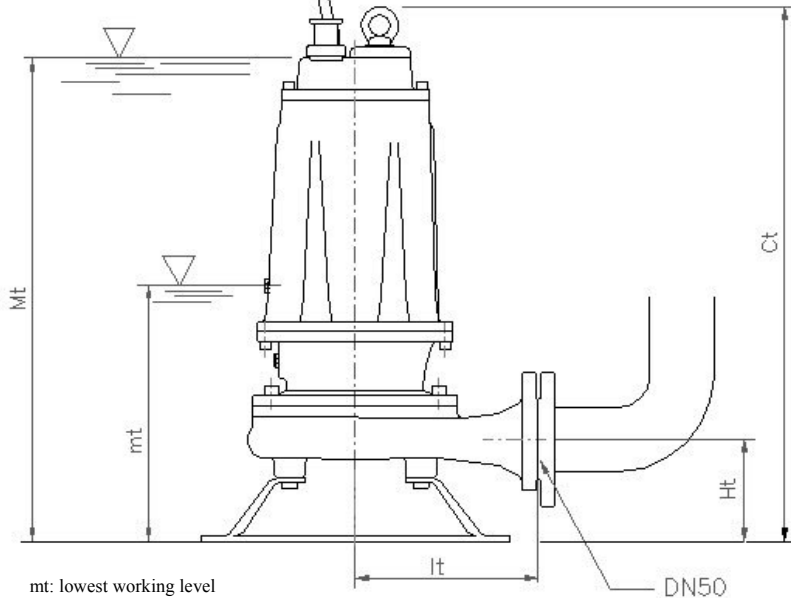
Free passage : 10 mm

ACCESSORIES:

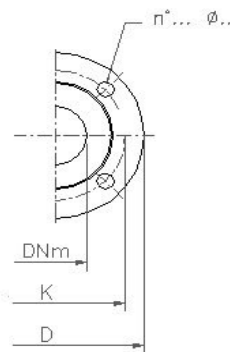
Counterflange



Mobile installation  
FC 410 ÷ 1000 T



mt: lowest working level  
Mt: lowest level for continuous duty

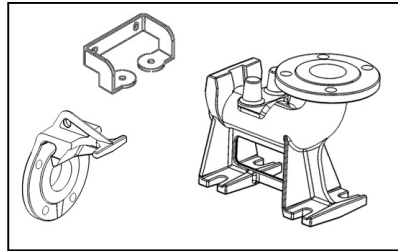


Depth of immersion:  
Max 20 m

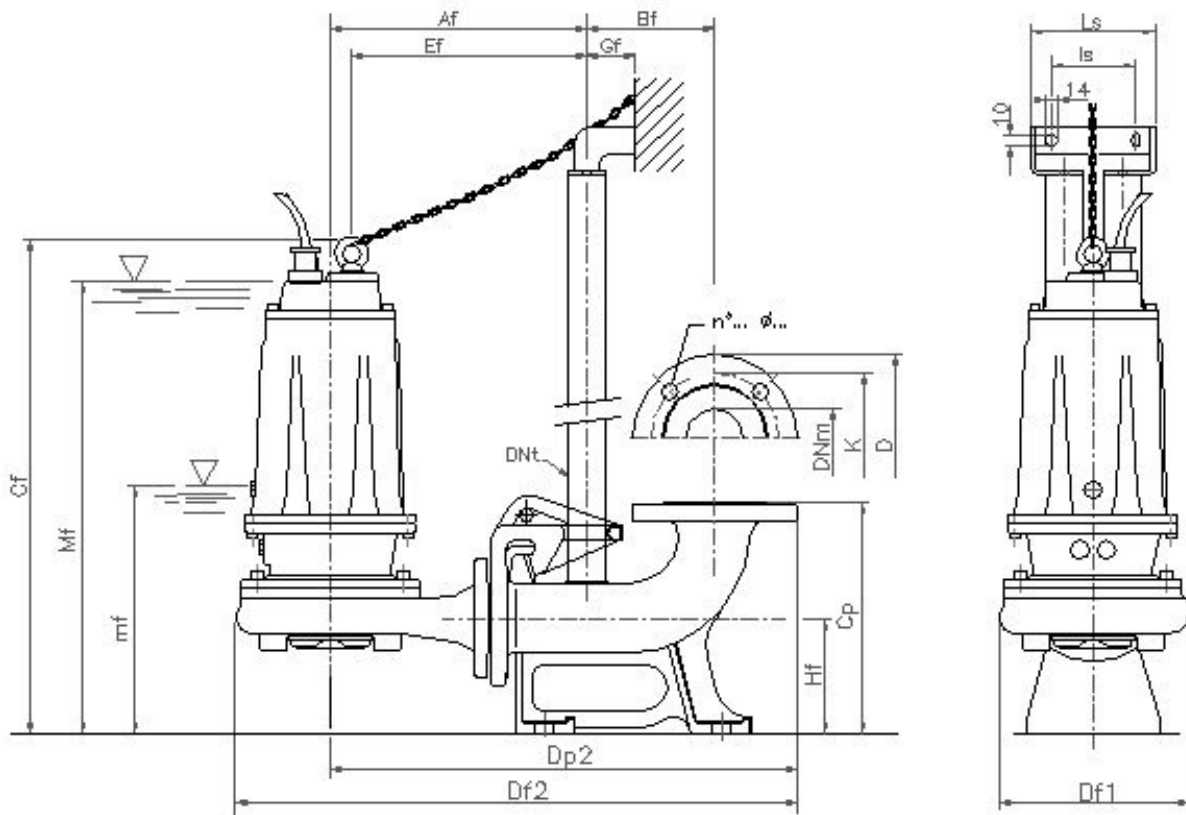
TYPE	DIMENSIONS (mm)					Flange UNI PN 10			Weight Kg
	Ct	Ht	It	mt	Mt	DNm	K	D	
<b>FC 410 T</b>	595	112	187	263	550	50	125	165	56
<b>FC 560 T</b>	595	112	187	263	550	50	125	165	64
<b>FC 750 T</b>	680	160	250	280	630	65	145	185	92
<b>FC 1000 T</b>	680	160	250	280	630	65	145	185	96

ACCESSORIES:

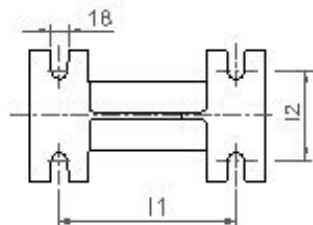
Quick coupling kit



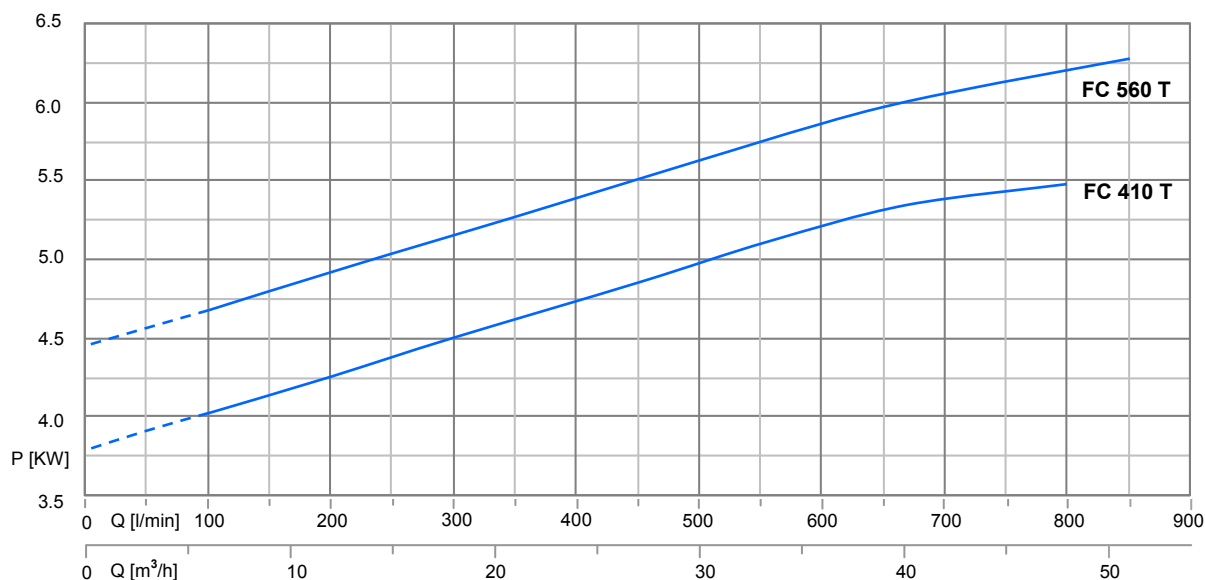
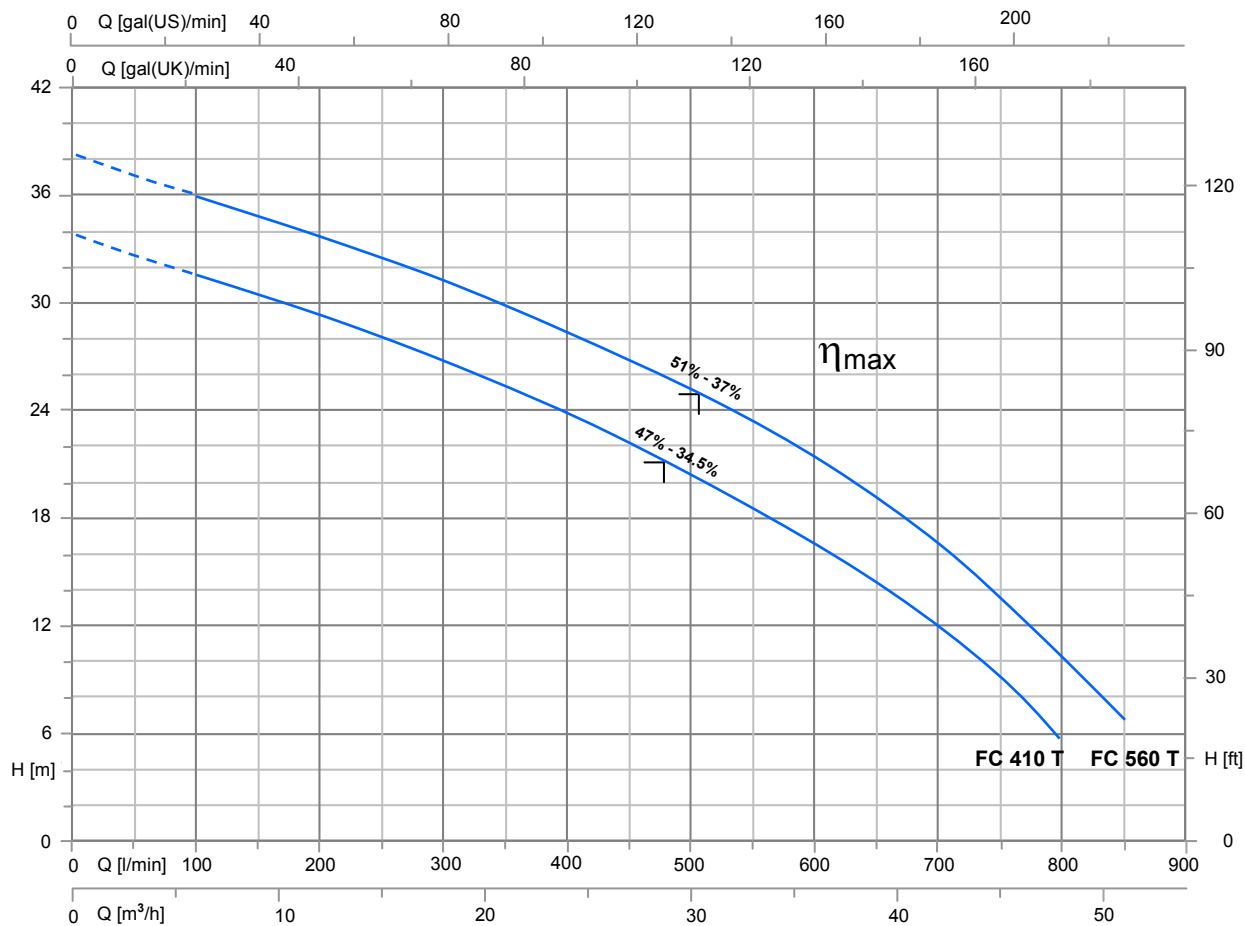
Fixed installation with quick coupling kit  
FC 750 ÷ 1000/ P T



mf: lowest working level  
Mf: lowest level for continuous duty

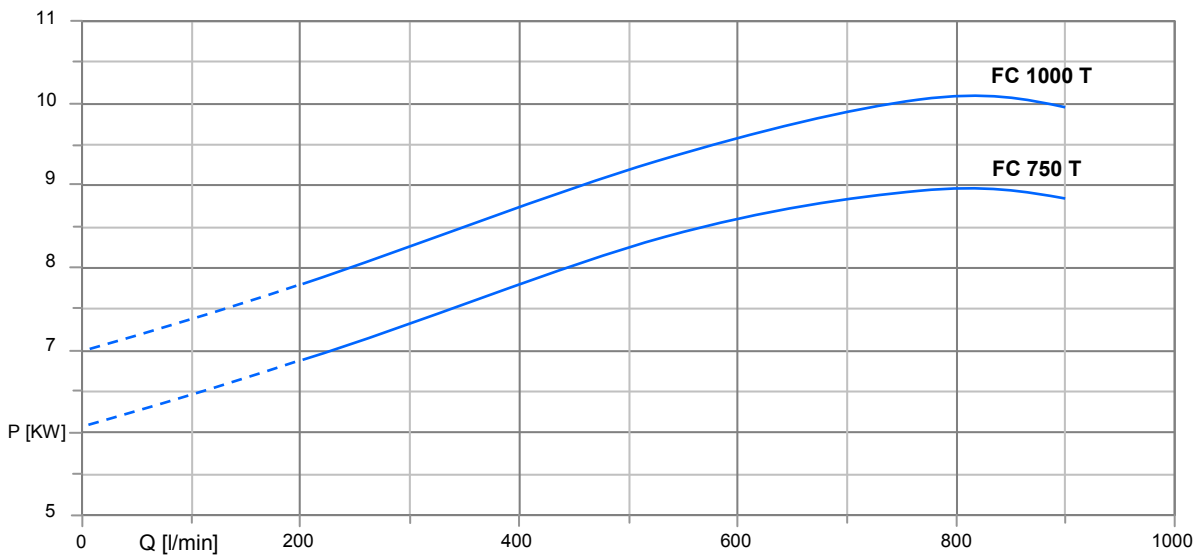
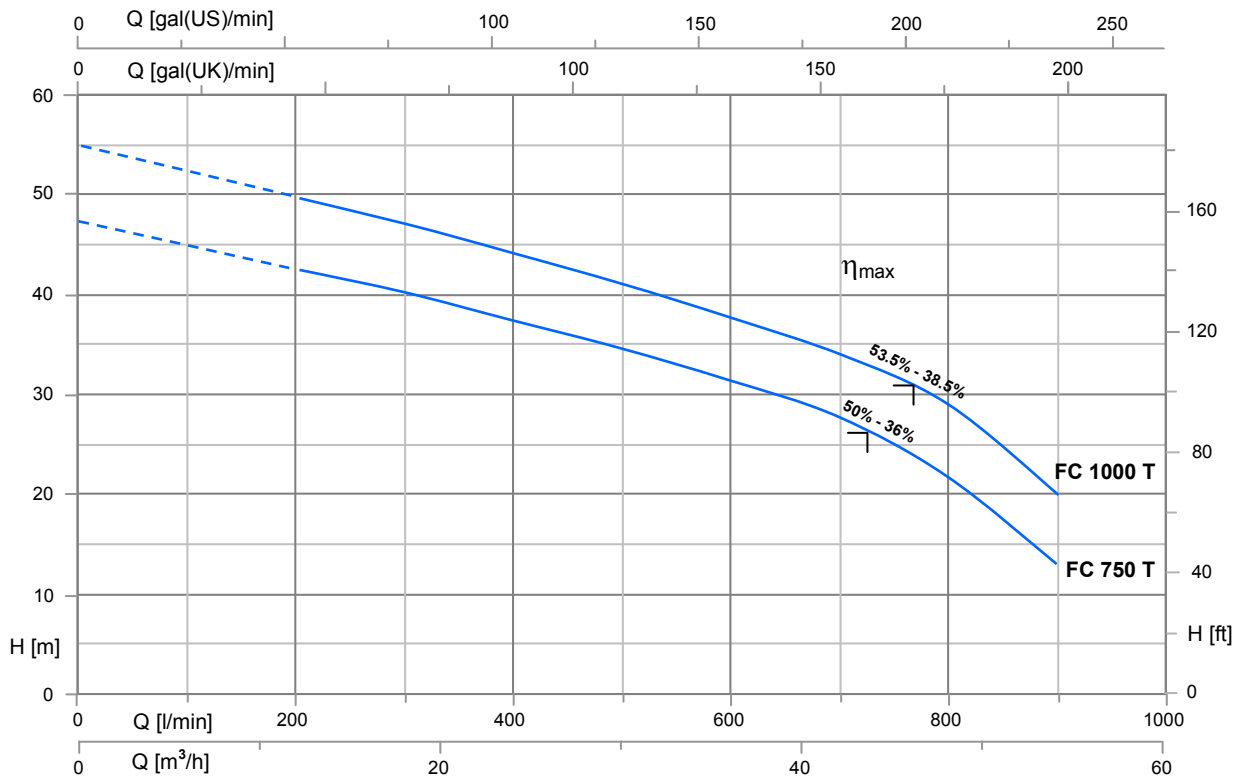


TYPE	DIMENSIONS (mm)																Flange UNI PN 10			
	Af	Bf	Cf	Cp	Df1	Df2	Dp2	Dnt	Ef	Gf	Hf	I1	I2	ls	Ls	mf	Mf	DNm	K	D
<b>FC 410/ P T</b>	535	145	614	260	237	654	535	1" 1/4	266	55	130	200	200	95	140	290	566	50	125	165
<b>FC 560/ P T</b>	535	145	614	260	237	654	535	1" 1/4	266	55	130	200	200	95	140	290	566	50	125	165
<b>FC 750/ P T</b>	566	145	656	260	279	724	566	1" 1/4	294	55	130	200	200	95	140	290	600	65	145	185
<b>FC 1000/ P T</b>	566	145	656	260	279	724	566	1" 1/4	294	55	130	200	200	95	140	290	600	65	145	185



TYPE	P <sub>2</sub>		P <sub>1</sub> (kW)	A	Q (m <sup>3</sup> /h - l/min)										
					0	6	12	18	24	30	36	42	48	51	
3~					0	100	200	300	400	500	600	700	800	850	
3 x 400 V - 50 Hz	(HP)	(kW)	3~	3X400V 50Hz	H (m)										
<b>FC 410 T</b>	4	3	5.5	8.9	33.8	31.6	29.2	26.8	23.9	20.5	16.5	12.0	5.9	-	
<b>FC 560 T</b>	5.5	4	6.3	10.7	38.7	36.1	33.9	31.2	28.3	24.7	20.9	16.3	10.4	6.5	

⌋ : η max Max hydraulic efficiency and respective total efficiency



TYPE	P <sub>2</sub>		P <sub>1</sub> (kW)	A	Q (m <sup>3</sup> /h - l/min)									
					0	12	18	24	30	36	42	48	54	
3~					0	200	300	400	500	600	700	800	900	
3 x 400 V - 50 Hz	(HP)	(kW)	3~	3X400V 50Hz	H (m)									
<b>FC 750 T</b>	7.5	5.5	9.0	15.3	47.6	42.9	40.4	37.7	34.7	31.2	27.4	22.3	13.1	
<b>FC 1000 T</b>	10	7.5	10.3	17.5	55.1	49.8	47.1	44.2	41.1	37.8	34	29.1	19.7	

∇ :  $\eta_{max}$  Max hydraulic efficiency and respective total efficiency